

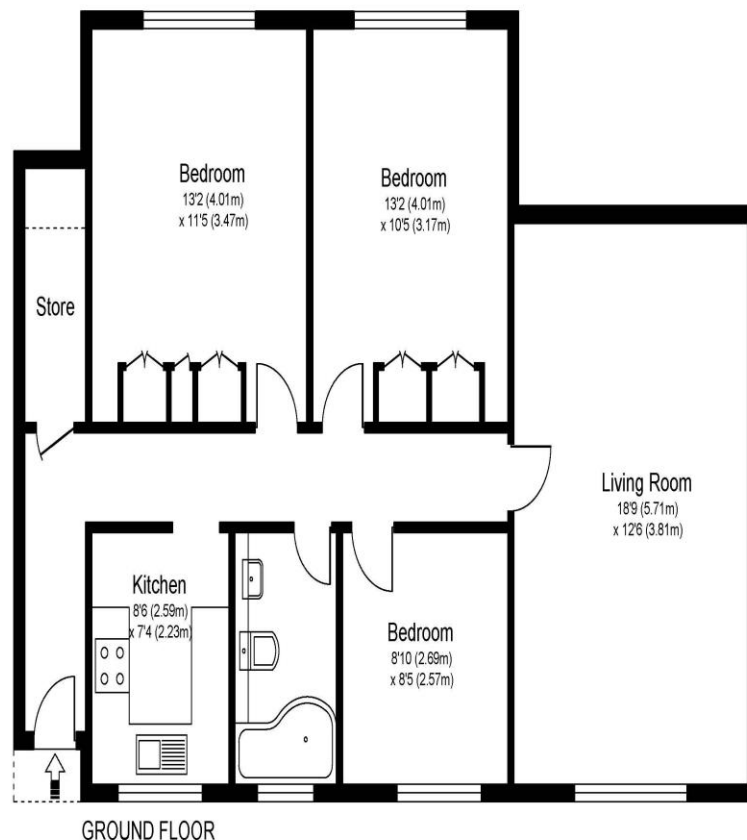


56 Arlington Lodge Weybridge Surrey KT13 8RD

£355,000



ARLINGTON LODGE, WEYBRIDGE, SURREY, KT13



Approximate Gross Internal Floor Area: 81 m sq / 870 sq ft

Whilst every attempt has been made to ensure the accuracy of the floor plan contained here, measurements of doors, windows and rooms are approximate and no responsibility is taken for any error, omission or misstatements. These plans are not to scale and are for representation purposes only as defined by RICS Code of Measuring Practice and should be used as such by any prospective purchaser. Specifically no guarantee is given on total square footage of the property if quoted on this plan. Any figure given is for initial guidance only and should not be relied on as a basis of valuation.

For sale with no onward chain, a three-bedroom ground floor maisonette, having been recently refurbished and benefiting from a garage. It rare to find a genuine three-bedroom maisonette and especially one such brilliantly situated in the centre of Weybridge. Internally this is a lovely home with good size rooms. There are three bedrooms, all double in size and the living room feels spacious with plenty of room for your lounge and dining areas. The kitchen is separate to the living space and well equipped. The bathroom has been recently refurbished and is fresh and modern in style. There is plenty of hallway space and a good storage cupboard which is essential for everyday life. You also have double glazing and gas central heating. Externally the block is well maintained and offers plenty of character and charm. You have a small patch of garden to the front of your home, and it looks like some of the neighbours choose to use this for further parking. You do also have the benefit of a garage situated in the block close by. In our opinion this is a superb location, right in the centre of Weybridge just moments from the High Street and all the amenities you may need. Weybridge train station is approx. 0.8 miles away and is on the mainline to London Waterloo.

EPC Rating C.



AGENTS NOTES: These details do not constitute any part of an offer or contract. In issuing them we do not have any authority to give any warranty or representation whatsoever in respect of this property. These details are provided without any responsibility on our part or the part of the vendors. No statements in these details are to be relied upon as representations of fact and purchasers should satisfy themselves by inspection or otherwise as to the accuracy of the statements contained therein.

Equipment: We have not tested the equipment or central heating system mentioned in these particulars and purchasers are advised to satisfy themselves as to their working order and condition.

Measurements: Great care is taken when measuring but measurements should not be relied upon for ordering carpets, equipment, etc.